



**BORDER
COUNTIES
RALLY**

17/18

MARCH

2017



REGULATIONS





The Brick & Steel Border Counties Rally 2017

A very warm welcome to the 2017 Border Counties Rally. As you will know, after a late call, this year's event includes, for the first time the Prestone MSA British Rally Championship. We have been given the challenging opportunity of being the opening round of the 2017 BRC series, in addition to our established commitment as the second round of the ARR Craib MSA Scottish Rally Championship and we look forward to the great variety of cars and mix of competitors this will bring to the Borders.

We are once again indebted to John McClory of Brick & Steel Construction for his continued support. John has sponsored the event for 15 years and the organisers would like to thank him for his invaluable input to the event.

The event will once again be based in Jedburgh, the host town for the seventeenth year running. Rally HQ will be back in the Town Hall, on Abbey Place where noise test, scrutineering and the start and finish will take place.

We have worked hard to secure stages in Wauchope, Craik and the Tweed Valley, all of which are in excellent condition. The National B event will compete some 45 stage miles in seven stages and the National A event will cover some 60 miles in nine stages. The difference between the two events will be the opportunity to compete on two stages in Craik Forest in the dark on Friday night. Whichever event you choose will present an excellent test for car and crew. There will be central service at Newtown St Boswells, in the Auction Mart and at the adjacent Scottish Borders Council HQ car park.

Competitors registered in championships other than the BRC can enter the National A event, subject to licence requirements and score points in their relevant championships on the Saturday.

John Parker Associates will be conducting a test stage prior to the event. For more information contact Tel 01661 824692 Mob 07885 804545. Email jparally@googlemail.com

As the only stage rally event based in the Scottish Borders, the Brick & Steel Border Counties Rally provides a unique opportunity to compete on some iconic Border forests and we look forward to seeing you in Jedburgh on 17th and 18th March where you can be assured a warm Borders welcome awaits.

The Organising Team.

The organisers would like to express their sincere thanks to all those who have helped with this event, in particular the following –

ARR Craib MSA Scottish Rally Championship
Prestone MSA British Rally Championship
SG Petch
Police Scotland
RalliTrak
The People of Jedburgh
Scottish Borders Council
SG Petch ANECC Rally Championship
Ecosse Challenge
All competitors
All Marshals and Officials

Brick & Steel Construction Co. Ltd.
Jedburgh Borders Tourist Board
All Rescue, Recovery and Medical Personnel
Forest Enterprise
Harrison & Hetherington
Jim Hewitt Gas Services
HRCR Motoscope Northern Historic Rally Championship
The Border Challenge
Gary Mitchell of WJM Timber
Lothian Estates
J. Laidlaw & Sons



DRIVING YOU TOWARDS A GREAT DEAL



SG PETCH
GET INTO SOMETHING GOOD

- Darlington 01325 488886
- Middlesbrough 01642 454375
- Durham 0191 3750062
- York 01904 466600
- Richmond 01748 825757

Log onto www.sgpetch.co.uk for some great deals!

SUPPLEMENTARY REGULATIONS

Article 1. Announcement

Hawick & Border Car Club Ltd. will organise a National A / B Special Stage Rally on Friday 17th and Saturday 18th March 2017. The event will be co-promoted by Whickham & District Motor Club Ltd. and Hawick & Border Car Club Ltd. and known as The Brick & Steel Border Counties Rally 2017. The event will be a qualifying round of the following Championships and Series:

	Permit no.
• The Prestone MSA British Rally Championship	2017/007
• The ARR Craib MSA Scottish Rally Championship	2017/010
• The Ecosse Challenge	2017/015
• The SG Petch ANECC Stage Rally Championship	15/2017
• The Border Challenge	TBA
• The HRCR Motoscope Northern Historic Rally Championship	2017/022

Article 2. Jurisdiction

The event will be held under the 2017 General Regulations of the Royal Automobile Club Motor Sports Association Limited (MSA), (incorporating the provision of the International Sporting Code of the FIA), the Motor Vehicles (Competitions and Trials) (Scotland) Regulations 1976 (as amended) these Supplementary Regulations and any other written instructions promoting Clubs or Championships may issue for this event.

Article 3. Authorisation

MSA National A Permit Number	99875
MSA National B Permit Number	99887
Scottish Office Authorisation	TBA

Article 4. Eligibility

The Brick & Steel Border Counties Rally 2017 is open to:

- National A: Drivers and Entrants holding a licence issued by the MSA must hold a valid Driver/Entrant National A or International licence. Co-drivers must hold a valid licence for National A stage rallies
- National B: Drivers and Entrants holding a licence issued by the MSA must hold a licence valid for National B stage rallies. Co-drivers must hold a licence valid for National B stage rallies.

All crew members must meet one of the following criteria:

- Fully elected members of the promoting clubs or
- Fully elected members of the clubs which are members of the following associations:
 - Scottish Association of Car Clubs
 - Association of the North East & Cumbria Car Clubs
 - Association of Northern Car Clubs
 - Association of the Northern Ireland Car Clubs
- Registered Competitors in the ARR Craib MSA Scottish Rally Championship who hold a valid Competition Licence issued by MSA, or by the ASN of a country which is a member of an EU (or comparable) country
- Any of the other invited Championships who hold a valid Competition Licence issue by the MSA.

For the duration of the event all competitors will be deemed to be temporary members of Whickham & District Motor Club Ltd. However, all Nat B competitors must still produce a membership card from an MSA registered club. Temporary members will not be eligible to win any WDMC award.

Competitors are reminded of the MSA's requirements for Entrants' Licences as laid down on the Licence Declaration Form and in the current MSA Year Book.

Where the Entrant is a legal entity, or in any case not part of the crew, the named driver on the entry form will be held solely responsible for all liabilities and obligations of the entrant throughout the event.

The Brick & Steel Border Counties Rally has been inscribed on the 2017 FIA International Sporting Calendar, under the heading 'National Competition with Authorised Foreign Participation' (NCAFP), therefore competitors from any one of the European Union (or comparable) countries holding National Competition Licences issued by those countries may enter.

Article 5. Timetable

Publication of ASR's	Entries Open
7th March 2017	Seeded Entries Close at 1200hrs
11th March 2017	Road Books, Competitors Bulletin No. 1 and Management information (if ordered) for seeded entries dispatched
15th March 2017	Entries finally close
16 th March 2017 1800-2100hrs	BRC Signing On and Reconnaissance Registration at Rally HQ
17 th March 2017 0700hrs	Reconnaissance starts at SS3 (registered BRC competitors in BRC 1 , 3, 4, 5, BRC Production Cup, BRC Junior & BRC Cadet only)
0800hrs	Service Park opens (NAT A) at Harrison & Hetherington Auction Mart, Newtown St Boswells
1100hrs	Nat A Noise Test, Scrutineering & Documentation open at Abbey Place, Jedburgh & Rally HQ
1400hrs	Nat B Noise Test, Scrutineering & Documentation open at Abbey Place, Jedburgh & Rally HQ
1700hrs	Publication of start list for Leg 1
1900hrs	First Car starts leg 1 (Nat A only)
2000hrs	Crew Briefing at Jedburgh HQ (Nat B)
2030hrs	Noise Test and Scrutineering close
2130hrs	Documentation closes
2250hrs	First Car due to finish leg 1 (Nat A only)
2359hrs	Publication of start list for Leg 2
18 th March 2017 0700-0730hrs	Noise Test & Scrutineering at Jedburgh (By prior appointment only)
0700-1000hrs	Rally HQ and Documentation open
0800hrs	Nat B Service Park Opens at Scottish Borders Council HQ, Newtown St Boswells
0830hrs	First Car starts leg 2.
1601hrs	First Car due to finish
1616hrs	Nat A podium ceremony and awards
1830hrs	Nat B awards presentation

Article 6. Classes

The class structure for The Brick & Steel Border Counties Rally will be:

National A

CLASSES	GROUPS
BRC1	S2000-Rally: 1.6T engine with a 28mm restrictor S2000-Rally: 2.0 Atmospheric Group R5 (VR5) Group R4 (VR4)
BRC Production Cup	Group NR4 over 2000cc
MSA Junior BRC	R2 (atmospheric over 1390cc and up to 1600cc – VR2B and turbo over 927cc and up to 1067cc – VR2B)
Cadet BRC	R2 (atmospheric over 1390cc and up to 1600cc – Vauxhall ADAM Cup and Ford Fiesta R2T National and Ford Fiesta 1.6 R2 cars)
BRC3	Group A over 1600cc and up to 2000cc Super 1600 R2 (atmospheric over 1600cc and up to 2000cc – VR2C and turbo over 1067cc and up to 1333cc – VR2C) R3 (atmospheric / over 1600cc and up to 2000cc – VR3C and turbo over 1067cc and up to 1333cc – VR3C) R3 (turbo / up to 1620cc / nominal – VR3T) R3 (diesel / up to 2000cc / nominal – VR3D)
BRC4	R2 (atmospheric over 1390cc and up to 1600cc – VR2B and turbo over 927cc and up to 1067cc – VR2B) Group A up to 1600cc Kit-car up to 1600cc Group N over 1600cc and up to 2000cc
BRC5	Group N up to 1600cc R1 (atmospheric up to 1600cc - VR1A/VR1B and turbo up to 1067cc - VR1A/VR1B)
National Rally Cup	Class 1 - All 2WD non-homologated cars up to 1450 Class 2 - All 2WD non-homologated cars - 1451cc to 1650cc Class 3 - Front wheel drive non-homologated cars – 1651cc to 2050cc Class 4 - Rear wheel drive non-homologated cars – 1651cc to 2050cc Class 5 - All 2WD non-homologated cars over 2050cc Class 6 – Any 4WD car not classified in Class 7 Class 7 - Any derivative of FIA R5 car out with its homologation

National B

- 1 - 2wd cars up to 1450cc
- 2 - 2wd cars – 1451cc to 1650cc, 8 valves or less
- 3 - 2wd cars – 1451cc to 1650cc, more than 8 valves
- 4 - 2wd cars – 1651cc to 2050cc, 8 valves or less
- 5 - Historic Category 1, 2 & 3 Rally Cars as defined in the General Regulations of the MSA.
- 6 - Fwd cars - 1651cc to 2050cc, more than 8 valves
- 7 - Rwd cars – 1651cc to 2050cc, more than 8 valves
- 8 - All 2wd cars over 2051cc

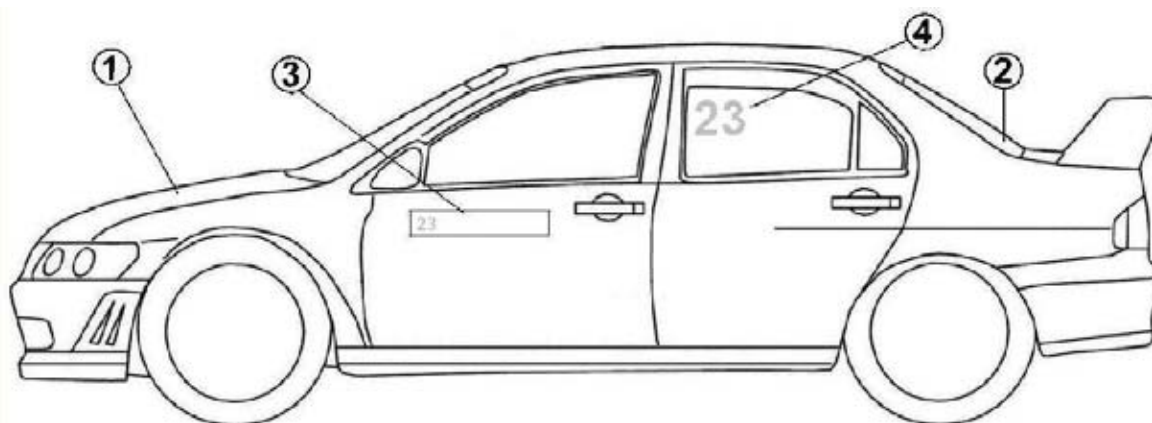
- 9 - FIA Homologated GpN 4wd cars and cars previously homologated as such, providing these run as per their FIA homologation papers
- 10 - Any other 4wd car not classified in class 11 or 12 without a sequential gearbox
- 11 - FIA Homologated GpA 4wd cars, FIA Homologated Super 2000 cars & FIA Homologated R4 cars, and any cars previously homologated as such, providing these run as per their FIA homologation papers.
All Metro 6R4's and any derivative therefrom
Any other 4wd car not classified in class 12 with a sequential gearbox.
- 12 - FIA Homologated WRC cars and cars previously homologated as such and FIA Homologated R5 cars. Any derivative therefrom

A competitor in the MSA Scottish Rally Championship with a car which does not conform to any of the above classes will be classified in an appropriate class, at the discretion of the Championship Management Committee.

Should any of these classes have less than five entries; the Organisers reserve the right to amalgamate class awards.

Article 7. Identification

1. Competitors must make space available to the organisers of the event and the promoters of the championship, specific areas R6.1.3(b) and H29.1.1-H29.1.3 on the vehicle as shown on the diagram.
2. All competitors are required to have event, championship and sponsor decals fitted, prior to presenting their cars for scrutineering. Failure to do so may result in a refusal of start.



- 1 & 2 The Brick & Steel official rally plate.
 - 3 The Brick & Steel official event logo & WRC style number.
 - 4 High visibility numbers to be placed at the top of both rear side windows" R6.1.3(b)
- Decals 1, 2, 3 and 4 will be provided by the organisers.

As this event is likely to be televised, competitors are reminded of the MSA Regulations concerning Tobacco Advertising (H28.1.6).

Article 8. Entries

The standard entry fees are as follows:

National A: BRC 1, 3, 4, 5, Junior BRC, Cadet BRC and BRC Production Cup	£950
BRC (National Rally Cup)	£750

National B: £565

Any non-BRC competitor who wishes to compete on the Nat A event, may do so if both crew members possess the correct grade of competition licence. They will not be allowed to participate in reconnaissance. They will be eligible for their relevant championship points based on stage times and penalties on Leg 2 only. Championship co-ordinators will be responsible for awarding points based on Leg 2. The entry fee and classes will be as the BRC National Rally Cup. No refund will be given to a competitor who retires on Leg 1 and does not restart under Rally2

Entry fees will include:

- One Service Pack, (all crews) and one Management Pack if requested (non-BRC competitors only)
- One service plate (all crews) and one management plate (non-BRC competitors only)
- Reconnaissance for BRC 1, 3, 4, 5, Junior BRC, Cadet BRC and BRC Production Cup

Entrants selecting a Service Pack may also request a Management Pack (non-BRC competitors only) using the online entry system or the official entry form.

Cheques or postal orders MUST be made payable to 'Border Counties Rally'.

Competitors may also pay by BACS or Paypal. BACS details are below please state receipt number when paying. Paypal is subject to the usual 4% surcharge.

Bank - Bank of Scotland, 7 High St, Hawick, TD9 9DA
Account Name - H & BCC No 2 B C Rally
Sort Code - 80-16-22
Account Number – 00221068

Payments from overseas can be made on the following –

IBAN: GB13BOFS80162200221068
BIC: BOFSGB21165

All entries must be made on the online entry system or the official entry form, both of these can be found at:

www.bordercountiesrally.co.uk

If using the official entry form, this should be sent, accompanied by the appropriate fees to:

Sarah Murdie, 30 Ashloaning, Denholm, nr Hawick, Scottish Borders, TD9 8NW

Tel – 01450 870859 mobile – 07960635923

Email – entries@bordercountiesrally.co.uk

1. The order of starting will be at the Organiser's discretion but to assist seeding, entrants should note their previous best results on their entry form.
2. The National A and National B events will be running concurrently on Saturday 18th March, there will be a SINGLE start list combining both events.
3. The maximum entry is 150 in total, plus 15 reserves. The organisers reserve the right to cancel the event or reduce stage mileage if less than 105 entries are received.
4. Entries open on publication of these regulations and will close for seeding at 1200hrs on 7th March 2017. Entries received after this date may be accepted at the organisers discretion and maybe appropriately accommodated in the running order, but will be omitted from press releases, the published entry list and the event programme.
5. Entries withdrawn in writing before Tuesday 7th March 2017 will be refunded in full.
6. Entries withdrawn after Tuesday 7th March 2017 will be refunded at the organisers discretion.
7. Withdrawn entries must be notified in writing, by letter or email to the Entries Secretary and the date of receipt will be deemed the date of withdrawal. Verbal withdrawals of entry will not be accepted.

8. Reserve entries that are not accepted will have their entry fees refunded in full. In the event that the rally is cancelled or postponed, entrants will have their entry fees refunded less an administration charge.
9. The Entries Secretary must be advised, in writing, of any modifications to entries. Changes will only be accepted up to one hour before the competition starts and at the discretion of the Clerk of the Course.
10. National B competitors travelling to the event from overseas should contact the Entries Secretary for details of incentives.
11. There will be no facility for payment of entry at documentation. Full payment of entry must be received by final closing date in order to be valid.

Article 9. Officials

Stewards of the Meeting

MSA Safety Delegate	Jonathan Lord	
MSA Steward	TBA	
Club Stewards	Colin Salkeld / Alistair Maxwell	
MSA Clerk of the Course	Clayton Lackenby	Mob: 07801 823294 clerk@bordercountiesrally.co.uk
Deputy Clerks of the Course	Andrew Kellitt (Nat A) Peter Metcalfe (Nat B) Graham Provest (Nat B)	Mob: 07850 479336 Mob: 07703 574868 Mob: 07811 354373
Assistant Clerk of the Course	Dave Robson	Home:01835 830525 Mob:07792 267216 daverobson@bordercountiesrally.co.uk
Secretary of the Meeting	Fiona Lackenby	Mob:07716 320106 secretary@bordercountiesrally.co.uk
Entries Secretary	Sarah Murdie	Home:01450 870859 Mob:07960 635923 entries@bordercountiesrally.co.uk
Chief Marshal	Guy Wickham	Home:01661 881172 Mob:07989 322186 marshals@bordercountiesrally.co.uk
Event Safety Officer	Colin Smith	
Spectator Safety Officer	Graham Provest	
Spectator Safety Supervisor	Andrew Whittaker Tom Herron Keith Hetherington	
Communications Officer	Lindsay Burnip	Mob:07727 098450 comms@bordercountiesrally.co.uk
Recce Manager	Dave Weston	
Results Service	Ron Jackson, North East Rally Services	
Nat A Competitor Liaison Officer	Iain Urquhart	
Nat B Competitor Liaison Officer	Michelle Falconer	
MSA Chief Timekeeper	Ian Sharp, S.M.A.R.T Timing	
Chief Medical Officer	Steve Miles	
Deputy Chief Medical Officer	Martin Huitson	
MSA Chief Scrutineer	Jock Hislop	
Eligibility Scrutineers	Stuart Cant & Willie Greig	
Environmental Scrutineer	Peter Clingan	
Jedburgh Liaison Officer	Ian McCutcheon	Mob:07973 623189
Media Officer	Lara Holman	media@bordercountiesrally.co.uk
Website	Mark Jose	
Social Media	Greg McCutcheon	
Service Area Co-ordinator	Peter Metcalfe	
Set Up Co-ordinator	George Rettie	
Safeguarding Officer	Lindsay Burnip	comms@bordercountiesrally.co.uk

Please do not phone officials after 2100hrs

Article 10. Route and Road Book

The rally route will be contained within the following 1:50,000 (latest Edition) Ordnance Survey Maps 73, 74, 79 and 80. Scrutineering and the event start and finish will take place outside Rally HQ at Jedburgh Town Hall, Abbey Place, Jedburgh. MR74/651204. Documentation will be held in Rally HQ and the official notice board will be situated here for the duration of the event For route outline with stage mileage and time schedule, see Appendix 1.

1. The total route will consist of, National A, 9 stages, approximately 58 miles with 210 road miles and National B, 7 stages, approximately 45 miles with 139 road miles. All stages are on Forest Enterprise roads. Competitors will be supplied with a tulip road book.
2. Time Cards:
Nat A: timecards for leg 1 will be issued at the first time control in Jedburgh. Timecards for leg 2 will be issued at the Parc Ferme out control on Saturday.

Nat B: timecards will be issued at signing on.

These documents will contain all the necessary information to enable competitors to comply with R2.3.2 and R33.

Article 11. Scrutineering and Documentation

1. At scrutineering cars will be examined for compliance with the 2017 MSA Tyre, Technical and Safety Regulations as well as for class eligibility, R46-49,
2. FIA/FISA Homologation Forms valid for 2017 international Rallies must be provided and made available at Scrutineering, and on demand throughout the event, for each Group A or Group N car. Failure to provide the form will lead to re-classification where appropriate or exclusion.
3. No competing car may carry more than one physically disabled person, whose participation in the competition must be approved by the MSA. A blue disc with a black letter D should be affixed on the appropriate door. Specific restrictions may apply (H.12)
4. **Fuel:** The event will be making application to the MSA to modify J5.13.4 to allow the use of fuels of an octane rating up to 102. Competitors should be aware if they are using a fuel over 100 octane it could affect their ability to claim championship points. Please check with your championship co-ordinator.
5. Competitors wishing to carry a video camera **MUST** have written permission from the Secretary of the meeting **PRIOR** to scrutineering and present the written authorisation to the Chief Scrutineer at Scrutineering J5.21.1. Failure to produce the authorisation form will lead to a **REFUSED START**. The competitor may be issued with a sponsor's logo which must be located in the centre of the dashboard in view of the camera. The commercial rights to all videos/sound material recorded on this event are the copyright of The Brick & Steel Border Counties Rally.
6. All vehicles must carry a warning triangle, SOS/OK board, first aid kit and a **SPILL KIT** J5.20.13. Spill Kits can be purchased from the event Environmental Scrutineer (Peter Clingan) and will be available from the noise test.
7. **Saturday Scrutineering will be by prior arrangement with the organisers.**
8. All competitors must have signed on and completed all documentation no later than 1 hour before their start time.

Article 12. Driving Standards Observers/Judges of Fact

1. Named judges of fact, appointed by the Organisers, will be on duty throughout the rally to observe and report as per R24.7-R24.10.1. The names of these officials will be posted on the Official notice Board. All other signed on marshals will be deemed Judges of Fact.
2. Any notified offence by a competitor or his service crew or management personnel which involves speeding, reckless driving, failing to observe road signs will automatically be considered as a possible contravention of C1.1.4 (any proceeding or act prejudicial to the interest of the Motor Sports Council or of Motor Sport in general). The competitor concerned is liable to be penalised in accordance with chart R32.2 and may be called before an MSA Disciplinary Tribunal.
3. Any cases reported to the MSA by the Police for speeding, reckless driving or failing to observe road signs will automatically be considered a contravention of rule C1.1.4 (any proceeding and or act

prejudicial to the interest of the Motor Sports Council and or of Motor Sport generally) and the competitor concerned will be liable to be called before a Disciplinary Tribunal. It will not be necessary to prove that a traffic offence was committed, as the involvement of the Police may, give rise to contravention of C1.1.4.

Article 13. Timing and Controls

1. Lateness in excess of Target time on Road Sections and Special Stages is cumulative. Once a Competitors cumulative lateness calculated from the previous Main Control exceeds the **penalty free maximum of 15 minutes**, R31.2.5 and R31.2.6, the Competitor will be RETIRED from the event.
2. Special Stage Timing will be to the previous tenth of a second R31.1.3.
3. At all time Controls on Road Sections, competitors who are early may wait for their Due Time outside the Control. The time recorded at these Time Controls shall be the time on the official clock when the crew **submits** the Time Card to the Official, provided that the car and both crew members are within the control area. Once a competitors car enters the control area the crew must submit their Time Card to the Official within one minute; (i.e. a Competitors car may enter the Control Area up to 59 seconds before their Due Time, without incurring a penalty for early arrival) R30.2 – R30.3.2

Article 14. Re-start After Retirement / Rally 2

Any crew which has failed to complete Leg 1 can re-start the rally from the start of Leg 2 only if they confirm their intention to the clerk of the course one hour prior to the publication of the start list of Leg 2. The competitor must advise the organiser of the reason for retirement (e.g. accident, technical problems, etc.) and the intention to have the car re- scrutineered.

This shall apply to any car which has not been classified on the grounds of exceeding the time limit or has failed to report to a control, but shall not apply where the car has been excluded for breach of eligibility requirements, traffic infringements or by a decision of the Stewards.

PENALTIES

For all crews which re-start a time penalty will be applied. This time penalty will be as follows:

- For every stage missed: 7 minutes.
- However, should the first special stage that is missed be:
 - the last stage before an overnight regroup, the penalty will be 10 minutes. This 10 minute penalty can be applied only once in a rally.
- This time penalty will be added to the fastest time of the driver's class for each missed stage, which shall include the special stage on which the crew has retired. For national rally cup drivers, this time penalty will be added to the fastest time achieved in its class by a national rally cup driver.
- Should retirement occur after the last special stage before an overnight regroup, the crew will be deemed to have missed that last special stage.

REPAIRS AND SCRUTINEERING

Service location and time allowed

- Any car which fails to finish Leg 1 in accordance with the above may be repaired at the competitor's discretion. However, the car must report to the overnight parc ferme prior to Leg 2, no later than 30 minutes before the scheduled start of the first car.

Scrutineering of repaired cars

- The car must retain its original body shell and engine block as marked at pre-rally scrutineering. The competitor must be present during this re-scrutineering at a time to be advised by the organisers.

Article 15. Route Notes

1. The subjective route note suppliers are:
 - Scotmaps. Route notes prepared by Bill Sturrock (Scotmaps) will be available in various formats (see www.scotmaps.co.uk for details). Tel 01356 625080.
 - ONTHEPACENOTE.COM. Route notes prepared by Killian Duffy www.onthepacernote.com
 - Patterson Agencies www.rallynews.net Telephone: 028 9084 4111
2. Only the notes provided for the 2017 event by the authorised supplier may be used. R25.9-R25.9.5.
3. In all instances, competitors are advised that the Organisers accept no responsibility or liability in the use of subjective route notes.

Except as allowed for under Articles 15.1 to 15.3, the possession of pace notes, as defined in R25.9, by a Competitor during the course of the rally, whether or not they relate to the stages being used on the rally, is forbidden. This does not preclude the use of Ordnance Survey Maps specified in the regulations as being necessary to complete the route.

Article 16. Reconnaissance (BRC Classes 1, 3, 4, 5, BRC Production Cup, Cadet BRC and Junior BRC only)

Reconnaissance will be governed by BRC Regulation 14 and these supplementary regulations:

Competitors must signify on the entry form their intention to take part in the Reconnaissance. They must download and fill in the Reconnaissance Registration form from the competitor section of the event website, and bring the completed form to Reconnaissance Registration. Failure to complete this form may lead to being refused reconnaissance. Reconnaissance Documentation will take place on Thursday 16th March 2017 from 18:00 to 21:00, and will be located at Jedburgh Town Hall.

A Road Book covering the Reconnaissance road sections and schedule will be available to download along with the main road book from the secure competitor's section of the website (hard copies will not be available at Reconnaissance Registration).

The organisers strongly advise competitors to check with their own insurers that they have valid insurance cover to take part in the Reconnaissance. The organisers will also take details of the Reconnaissance vehicle. The organisers may at their discretion and with the agreement of the Stewards of the Meeting refuse a start to any competitor who is found to have carried out unauthorised practice or reconnaissance over the route of any Special Stage. Those living on a Special Stage, or who may have cause to drive along a Special Stage for whatever reason, should inform the organisers in advance.

Specific Restrictions

At Reconnaissance Documentation competitors will be issued with Reconnaissance Identification Plates, which must be fitted to the side windows of the vehicle. Failure to do so will be deemed to be a breach of Reconnaissance Regulations.

There is a speed limit of 30 mph (48 km/h) on Special Stages during Reconnaissance. Calibrated Radar speed checking equipment will be used.

The reconnaissance will be run to a convoy system. Vehicles will proceed through the Special Stages at intervals of approximately 20 seconds. This interval must be maintained throughout each Stage. Competitors numbered 1 to 15 will start in seeded order. All other competitors will start in order of arrival.

Competitors disrupting the flow of the convoy in a way which, in the opinion of the organisers, causes or could cause danger to other competitors may be penalised. Drivers may proceed through the Special Stages only

when instructed by officials. Unless advised to the contrary, each vehicle and competitor may traverse each stage only twice. Judges of Fact will be observing driving standards. Competitors are reminded that the roads to be used as Special Stages are not closed to other traffic during the Reconnaissance and that Forestry Commission operations will be in progress in certain areas.

Article 17. Service and Management Service

1. Two categories of service vehicle will be permitted; Service vehicles and Management vehicles (non-BRC only). A maximum of one Service vehicle and one Management vehicle will be permitted per competing Car. Crews may utilise a Management vehicle only for both Management service and Service.
2. Each Service or Management vehicle must be registered with the Organisers, full personnel and vehicle details and vehicle registration number along with a mobile telephone number of personnel for each vehicle will be required before an official plate is issued for each vehicle. The use of a Service or Management plate on a vehicle not previously registered with the Organisers is an offence for which a penalty of **EXCLUSION** will be applied.
3. There will be two Service Parks where work may be carried out by the Service personnel and/or Management personnel on the competing car. The National A Service Park is located at Harrison & Hetherington Auction Mart, Newtown St Boswells. It will only be accessible to competitors and Service vehicles bearing official plates. The National B Service Park is located at Scottish Borders Council HQ. It will only be accessible to competitors and Service vehicles bearing official plates. Management vehicles bearing official plates will park in the overflow car park. No other areas may be used by Service vehicles, which are required to follow a prescribed route to and from the Service Parks. All other areas will be **Out of Bounds** to Service personnel and their vehicles.
4. Emergency servicing for non-BRC competitors will be permitted in designated areas after some special stages from a Management vehicle displaying the appropriate Management plate. These plates may only be used on conventional saloon cars or their estate car derivatives or on certain 4x4 off-road leisure vehicles subject to approval by the Organisers. The use of roof racks is not permitted. These vehicles must follow the instructions issued by the Organisers in the Management vehicle pack, which will specify sections of the rally route which are out of bounds to Management vehicles. **Servicing off route is strictly forbidden**, the penalty of **EXCLUSION** will apply.
5. The organisers' will supply sufficient route information in the form of marked maps to allow Service and Management personnel to traverse the required route.
6. Other than the bona fide purchase of pump fuel from commercial filling stations on route, refuelling will be restricted to the refuel zone immediately after Service A, B & C. Vital Equipment will be present with their fuel rigs and there will be a manual refuelling area also for National B competitors only. The penalties for non-compliance will be exclusion from the results. Refuelling is not permitted from any vehicle out with the refuel zone. For non-BRC competitors there are commercial filling stations located on road sections after stage 2 on leg 1 and stages 4 and 9 on leg 2

Article 18. Penalties

1. The penalties in appendix R32.2 will apply unless specifically modified in these SR's or any subsequent official bulletins.
2. The use of helicopters or light aircraft by any competitor or persons associated with any competitor will be penalised by EXCLUSION from the results and reported to the MSA as per R39.3.
3. Failure to carry RalliTrak radio in the competing car at any point during competition will be penalised by immediate EXCLUSION from the event.

Article 19. Results

1. Provisional results will be published within two hours of the last car finishing the event. Any protests must be lodged in accordance with C5.1 to C5.7. Appeals must be made in accordance with C6.1 and C6.6.
2. Competitors shall ensure that they and their cars are available for inspection should a protest be submitted in accordance with C5.1. If the protested vehicle is not available for inspection, the competitor may be excluded from the results.

Article 20. Awards

National A Overall

1st Driver – Brick & Steel National Trophy and Engraved Awards: Co-driver – Engraved Awards

2nd Driver - Engraved Awards: Co-driver – Engraved Awards

3rd Driver - Engraved Awards: Co-driver – Engraved Awards

National A Class Awards

1st Driver and Co-Driver Awards

2nd Driver and Co-Driver Awards

National B Overall

1st Driver - Brick & Steel Trophy and Replica

Co-Driver - Royal British Legion Shield and Replica

2nd Driver - Starrett Trophy and Replica

Co-Driver - Jethart Cup and Replica

3rd Driver - Kielder Trophy and Replica

Co-Driver - Border Reiver Trophy and Replica

4th Driver - Marc J Taylor Trophy and Replica

Co-Driver - Steel Bonnet Trophy and Replica

5th Driver - Carter Bar Cup and Replica

Co-Driver - Redesdale Cup and Replica

National B Class Awards

1st Driver and Co-Driver Awards

2nd Driver and Co-Driver Awards

Club Awards

1st Border Driver

Bill Butler Memorial Trophy and Award

1st Border Co-Driver

Richard Paterson Memorial Trophy and Award

1st Hawick & Border CC Crew

D.S. Dalgleish Trophy & Driver and Co-Driver Awards

1st Whickham & District MC Crew

Driver and Co-driver Awards

Additional Awards

Roy Herron Memorial Award

Best Presented Car at Scrutineering (in the opinion of Roy's fellow scrutineers)

Dr. Bob Pawson Award

Highest placed driver under 21 years old on the date of the event

Dave MacLennan Rose Bowl

Awarded to the crew or individual who represent the Spirit of the Rally (Nominations Welcome)

The RalliTrak Award

For making an outstanding contribution to the event

Historic Awards (Class 5)

1st in Class

Hawick & Border Challenger Cup, Replica and Co-Driver Award

2nd in Class

Whickham DMC Cup, Replica and Co-Driver Award

The organiser of the event or the organisers of the various championships may present additional awards. All winners must attend the presentation to collect their Awards. Awards will not be forwarded.

All Trophies will remain in the possession of the organising club(s).

Article 21. Insurance – Reis Motorsport Insurance

The Organisers have applied to Reis Motorsport Insurance for a Blanket Cover Note under the above scheme. This will provide competitors who need to use the scheme with the Third Party Cover necessary to meet RTA requirements on the Road Sections of the event.

The basic rate for the event before any loadings will be £25.00 for Nat A competitors and £19.00 for Nat B competitors. All applicants wishing to use the scheme must be able to comply with all points of the Reis Motorsport Insurance Declaration: -

Vehicles must have Insurance in place which provides Third Party Liability cover that complies with the Road Traffic Act. This can be either, by extending an existing motor policy to cover the event, or, by purchasing additional cover as an adjunct to an existing motor policy.

If a competitor uses an extension to an existing policy, they will be required to sign a declaration that the cover complies with the requirements of the Road Traffic Act. Any responsibility for a fraudulent or misleading declaration about existing cover lies with the competitor.

If a competitor wishes purchase additional cover via the organisers then they can do so prior to the event providing they comply with the following.

- **Age 19 years or over**
- **Has held a full licence for a minimum of 6 months**
- **Has no more than 6 points on their licence**
- **Has had no more than 1 fault claim in the last 3 years**
- **The vehicle has valid Tax, MOT and is currently insured for road use**

Anyone aged less than 19 years old will also be accepted at the same price should their co-driver be a more senior member of their family or over 25.

Any competitor who falls outside these parameters may be offered cover at equivalent terms or an agreed price, if approval from Reis Motorsport Insurance has been obtained by the event organisers, prior to the event.

Additional cover provided by this scheme is only effective whilst the vehicle is actively competing in the event, and remains under the control or direction of the event organiser(s). Cover will cease immediately if you are precluded, excluded or retire from the event.

The Event Organiser's RTA scheme is provided by Reis Motorsport Insurance and underwritten Zenith Marque Insurance Services Limited.

Reis Motorsport Insurance is a trading name of the Insurance Factory Limited. Insurance Factory Limited is authorised and regulated by the Financial Conduct Authority (No 306164). Registered in England and Wales number 02982445 at 45 Westerham Road, Bessels Green, Sevenoaks, Kent, TN13 2QB.

Zenith Marque Insurance Services Limited registered in England and Wales (No 2135730) is authorised and regulated by the Financial Conduct Authority (No 47557)

Article 22. Medical Assistance

In addition to using the SOS/OK board procedure, the event will also use the RalliTrak vehicle tracking system for your safety. This will be mandatory and the cost is included in the entry fee. Further details and instructions for its use will be included at the crew briefing and also issued along with the radio at Documentation by RalliTrak. Please make sure you ask any questions at this time. The fitting of the RalliTrak radio will be checked at the first time control of each day. No radio means NO start.

Article 23. Additional Information

Servicing: The areas set aside for servicing are owned by Harrison & Hetherington, Scottish Borders Council and Forest Enterprise. These organisations have a stringent commitment to preventing environmental damage and/or pollution and we the organisers of the Brick & Steel Border Counties Rally along with our Sponsors are committed to the same aims. The events hire of the service areas is subject to the following conditions and all competitors are advised that their use of these locations is conditional to them conforming to these conditions. If following the event the organisers receive complaints from anyone concerning the

conduct of any competitor, Service, or Management personnel, these will be forwarded to the MSA for further action.

Conditions of Service Park use:

All refuelling MUST take place in the Refuel Zone. Vital Equipment's refuel rig will be available in the Refuel Zone after service A, B & C. Refuelling from Management vehicles will only be permitted in the Refuel Zone. There will be no other area where refuelling will be permitted.

- All servicing must take place on a suitable groundsheet/tarpaulin
- All deposits from these tarpaulins MUST be swept up and disposed of in a rubbish sack.
- Any OIL Spillage MUST be contained by the use of a spill kit – then sealed and removed for safe disposal.
- No rubbish sacks to be left on site – these must be removed from site in the Service vehicle.
- No Fires or Barbecues permitted in any Service or Management location.
- No Driving or Parking on the GRASS VERGES within the service area locations under any circumstances.
- Any Damage to Grass Verges will be charged at £ 100.00 per Metre.
- Any Damage to Tarmac will be charged for and may lead to Exclusion from the event. Chart R32.2 (aa)(cc).
- All Service and Management vehicles MUST carry SPILL KITS.
- All Service and Management vehicles MUST carry hand held Fire Extinguishers.
- Servicing/Parking is ONLY permitted in the locations specified in the location plans.
- NO SPIKES OR SIMILAR to secure GROUND SHEETS, SHELTERS OR ANY OTHER STRUCTURES to be inserted into Tarmacadam or any other surfaces.

1. **Management Packs:** Will consist of one Management vehicle plate and one set of Management instructions. The organisers will supply sufficient route information in the form of marked maps to allow management personnel to traverse the required route.
2. **Helicopters and Light Aircraft:** The use of helicopters and light aircraft by any competitor or persons associated with any competitor over the route or stages used during the duration of this event is **PROHIBITED**. The penalty will be as per R39.3 plus a report being sent to the MSA for further action.
3. **Filming:** Any party wishing to make a film of video recordings, of any part of the event, for commercial purposes must obtain the necessary permissions from the Event Press Officer beforehand. Every assistance will be given to bone fide applicants. The commercial rights to all video/sound material recorded on either event are the copyright of the Brick & Steel Border Counties Rally.
4. **Press/Photographers:** Press Packs will be issued only to those bone fide persons who have registered with the Event Press Officer prior to the event and are in possession of MSA accreditation.
5. **Accommodation:** Competitors wishing to obtain information on accommodation in Jedburgh and the surrounding area should contact the Scottish Borders Tourist Information in Jedburgh. Tel 01835 863170. www.scot-borders.co.uk
6. **Trade Vehicles:** The Trade areas prior to the event start will be located at the Glebe Car Park; Jedburgh adjacent to the Start/Finish area, no passes will be required.

ARR Craib MSA Scottish Rally Championship 2017

Jurys Inn Arnold Clark Snowman Rally <i>Highland Car Club</i> www.snowmanrally.co.uk	18 February <i>Inverness</i>	Neil Moir - 01463 225508 <i>snowmanrally@gmail.com</i>
Brick & Steel Border Counties Rally <i>Hawick & Border CC and Whickham & District CC</i> www.bordercountiesrally.co.uk	18 March <i>Jedburgh</i>	Clayton Lackenby - 07801 823294 clayton.lackenby@bordercountiesrally.co.uk
McDonald & Munro Speyside Stages <i>63 Car Club (Elgin)</i> www.speyside-stages.co.uk	22 April <i>Elgin</i>	Neil Shanks - 01343 541559 speysidestages@gmail.com
RSAC Scottish Rally <i>RSAC Motorsport</i> www.scottishrally.co.uk	20 May <i>Dumfries</i>	Jonathan Lord - 0141 946 5045 jcl@rsacmotorsport.co.uk
Dunoon Presents Argyll Stages Rally <i>Mull Car Club</i> www.mullcarclub.co.uk	24 June <i>Dunoon</i>	Chris Woodcock – 07973 830695 chris.woodcock99@gmail.com
Grampian Stages <i>Stonehaven & District Motor Club</i> www.grampianstages.co.uk	12 August <i>Aberdeen</i>	Andrew Ritchie – 07831 224335 zen131906@zen.co.uk
Galloway Hills Rally <i>Solway, Machars and East Ayrshire Car Clubs</i> www.gallowayhillsrally.co.uk	9 September <i>Castle Douglas</i>	Isobel Riddick – 01556 660281 isobel@gallowayhillsrally.co.uk

Anyone wishing to obtain further details or a set of championship regulations should contact the Championship Co-Ordinator Robert Beck on 07554 995351 or rb@srcweb.co.uk or visit the official Championship website at: www.scottishrallychampionship.co.uk

Brick & Steel Border Counties Rally 2017 Time Schedule

Leg 1

Friday 17th March 2017

TC SS	LOCATION	SS Dist mls	Liaison Dist mls	Target Time	Car 1 Due
RZ 1	Refuel		(10.22)		
	Distance to next refuel	(12.66)	(83.18)		
0	START - Jedburgh	-			19:00
1		-	23.53	00:48	19:48
SS 1	Craik 1	-	-		19:51
SF1		6.33	-		
PC1		-	-		
1A	Regroup In	-	8.91	00:20	20:17
1B	Regroup Out	-	-	-	20:42
2		-	0.30	00:02	20:44
SS 2	Craik 2	-	-		20:47
SF2		6.33	-		
PC2		-	-		20:53
2A	Service In	-	30.00	01:00	21:53
	SERVICE A (St Boswells)	(12.66)	(62.74)	00:30	
2B	Service Out	-	-		22:23
RZ 2	Refuel		(10.22)		
	Distance to next refuel	(14.92)	(54.20)		
2C	Parc Ferme In - Jedburgh	-	10.22	00:27	22:50
				Sunrise	06:20
TOTAL FOR LEG 1				Sunset	18:20
		12.66	72.96		

TC SS	LOCATION	SS Dist m/s	Liaison Dist m/s	Target Time	Car 1 Due
2D	RESTART - Jedburgh	-			08:30
3			20.05	00:41	09:11
SS 3	Wauchope	-			09:14
SF3		8.26	-		
PC3	Forest Exit	-	-		
4			1.32	00:07	09:28
SS 4	Hyndlee	-			09:31
SF4		6.66	-		
PC4	Forest Exit	-	-		
4C	Service In	-	22.61	00:46	10:17
SERVICE B (St Boswells)		(14.92)	(43.98)	00:30	
4D	Service Out	-	-	-	10:47
RZ 3	Refuel				
	Distance to next refuel	(13.30)	(37.48)		
5		-	21.13	00:50	11:37
SS 5	Elibank 1	-			11:40
SF5		8.31	-		
PC5					
6		-	4.44	00:13	12:01
SS 6	Yair 1	-			12:04
SF6		4.99	-		
PC6	Forest Exit	-	-		
6A	Service In	-	11.91	00:25	12:34
SERVICE C (St Boswells)		(13.30)	(37.48)	00:30	
6B	Service Out	-	-	-	13:04
RZ 4	Refuel				
	Distance to next refuel	(16.46)	(59.63)		
7		-	24.52	00:57	14:01
SS 7	Cardrona	-			14:04
SF7		4.62	-		
PC7	Traquair	-	-		
7A	Regroup In	-	3.33	00:08	14:16
7B	Regroup Out	-	-	00:15	14:31
8		-	4.00	00:11	14:42
SS 8	Elibank 2	-			14:45
SF8		6.85	-		
9		-	4.47	00:14	15:06
SS 9	Yair 2	-			15:09
SF9		4.99	-		
PC9	Forest Exit	-	-		
9A	Abbey Place	-	23.31	00:47	16:01
				Sunrise	06:20
TOTAL FOR LEG 2		44.68	137.76	Sunset	18:20

Brick & Steel Border Counties Rally 2017 BRC Reconnaissance Schedule

Convoy Start	Stage	Miles to exit	Miles to next Stage	Total	Information
	<i>Miles to fuel</i>			<i>71</i>	
07.00	SS3 Wauchope	8.42	17.28		
07.50	SS3 Run 2	8.42	1.3		
08.20	SS4 Hyndlee	7.47	8.1		
08.55	SS4 Run 2	7.47	25.6		
			<i>(12.4)</i>		Fuel available in Hawick
	<i>Miles to fuel</i>			<i>134</i>	
10.00	SS1 & 2 Craik	6.5	9		
10.35	SS1 & 2 Run 2	6.5	23.3		
11.35	SS7 Cardrona	5.7	2.3		
12.00	SS7 Run 2	5.7	7.25		
12.30	SS5 & 8 Elibank	10.3	5.4		
13.00	SS5 & 8 Run 2	10.3	2.6		
13.30	SS6 & 9 Yair	6	3.4		
13.55	SS6 & 9 Run 2	6		205	12 miles to service park from exit.



Leading the way for transport across the UK

- UK Wide Transport & Distribution Specialists
- European Road Services
- Local & Radial Services
- National & International Pallet Delivery Service
- Warehousing & Storage
- Transport Management & Consultancy
- Freight Forwarding

Head office: Howe Moss Drive
Kirkhill Industrial Estate, Dyce
Aberdeen AB21 0GL
T: +44 (0)1224 771122

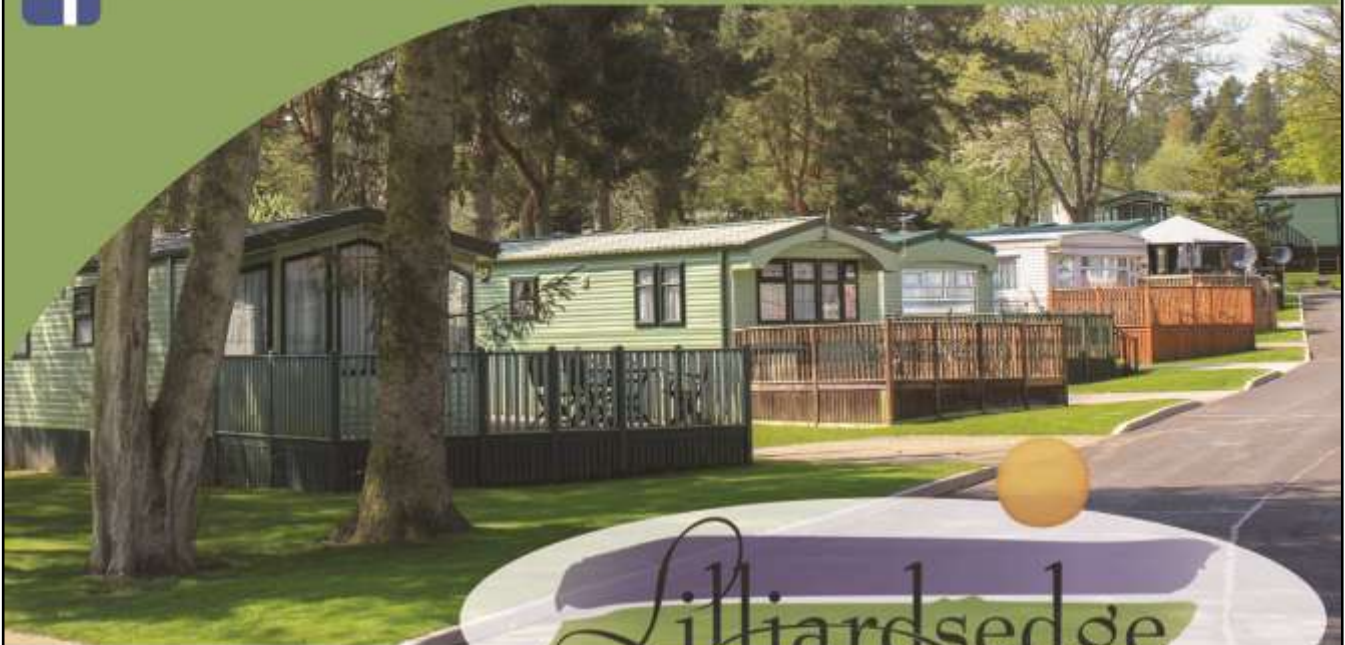
www.arr-craib.co.uk



ARR Craib Transport Ltd
Proud sponsors of the 2017 Scottish Rally Championship



www.facebook.com/lilliardsedgeholidaypark



Lilliardsedge

HOLIDAY PARK & GOLF COURSE

Luxury caravans and lodges for sale & hire
Superb touring & motorhome super pitches
9 hole golf course Bar and Restaurant
12 month season
Woodland walks



01835 830271

info@bordercaravans.co.uk

Lilliardsedge Holiday Park
Jedburgh
Roxburghshire
TD8 6TZ



FOR QUALITY IN

JOINERY • NEW BUILD • MODERNISATION
REFURBISHMENT • CIVIL ENGINEERING
CONCRETE REPAIRS
WINDOW REPLACEMENT
ELECTRICAL INSTALLATION



Photo - Lindsayphotosport

4-6 Boswell Square, Glasgow G52 4BQ

Tel: 0141 810 1919 Email: info@brickandsteel.com